

\_\_\_\_\_  
-----  
Name: \_\_\_\_\_

# Jen's Hat

Jen has a hat.  
Her hat is pink.

It is windy outside.

Oh no! The wind blew off  
Jen's hat!



## Preview

Please log in to download  
the printable version of this worksheet.

2. Where does the story take place?

- a. outside
- b. inside
- c. in a car

3. Jen's hat fell in the...

- a. water
- b. sand
- c. mud

Name: \_\_\_\_\_

# Jen's Hat

Circle the words  
that rhyme with *hat*.



**Preview**  
Please log in to download  
the printable version of this worksheet.

Trace.

has

Circle the word *has*.

has	haas	hass
haz	hazz	has
his	has	hes

\_\_\_\_\_  
-----  
Name: \_\_\_\_\_

# Jen's Hat

Trace the sentence. Draw a picture to match the sentence.



**Preview**  
Please log in to download  
the printable version of this worksheet.

Trace.

Jen's hat fell

in the mud.

## ANSWER KEY

# Jen's Hat

Jen has a hat.

Her hat is pink.

It is windy outside.



# Preview

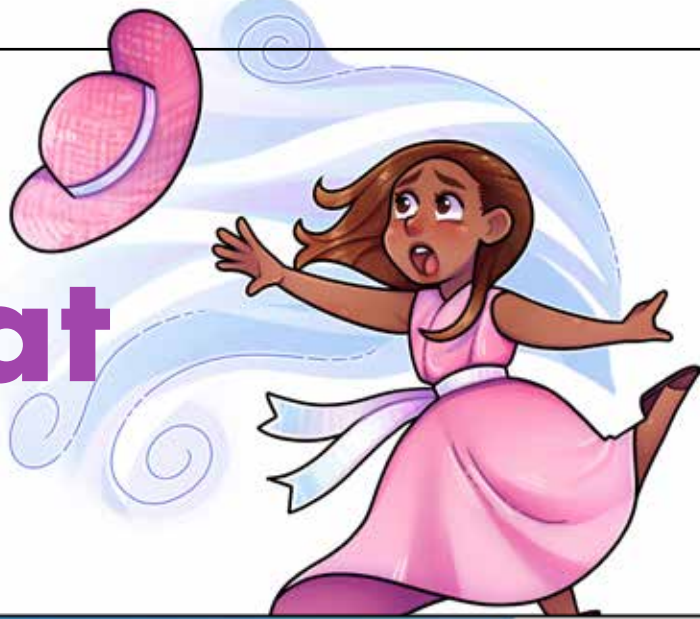
Please log in to download  
the printable version of this worksheet.



## ANSWER KEY

# Jen's Hat

Circle the words  
that rhyme with *hat*.



# Preview

Please log in to download  
the printable version of this worksheet.

