

Name: _____

Anatomy of a Flower

Identify each part of the flower and color.

male part of a flower

female part of a flower

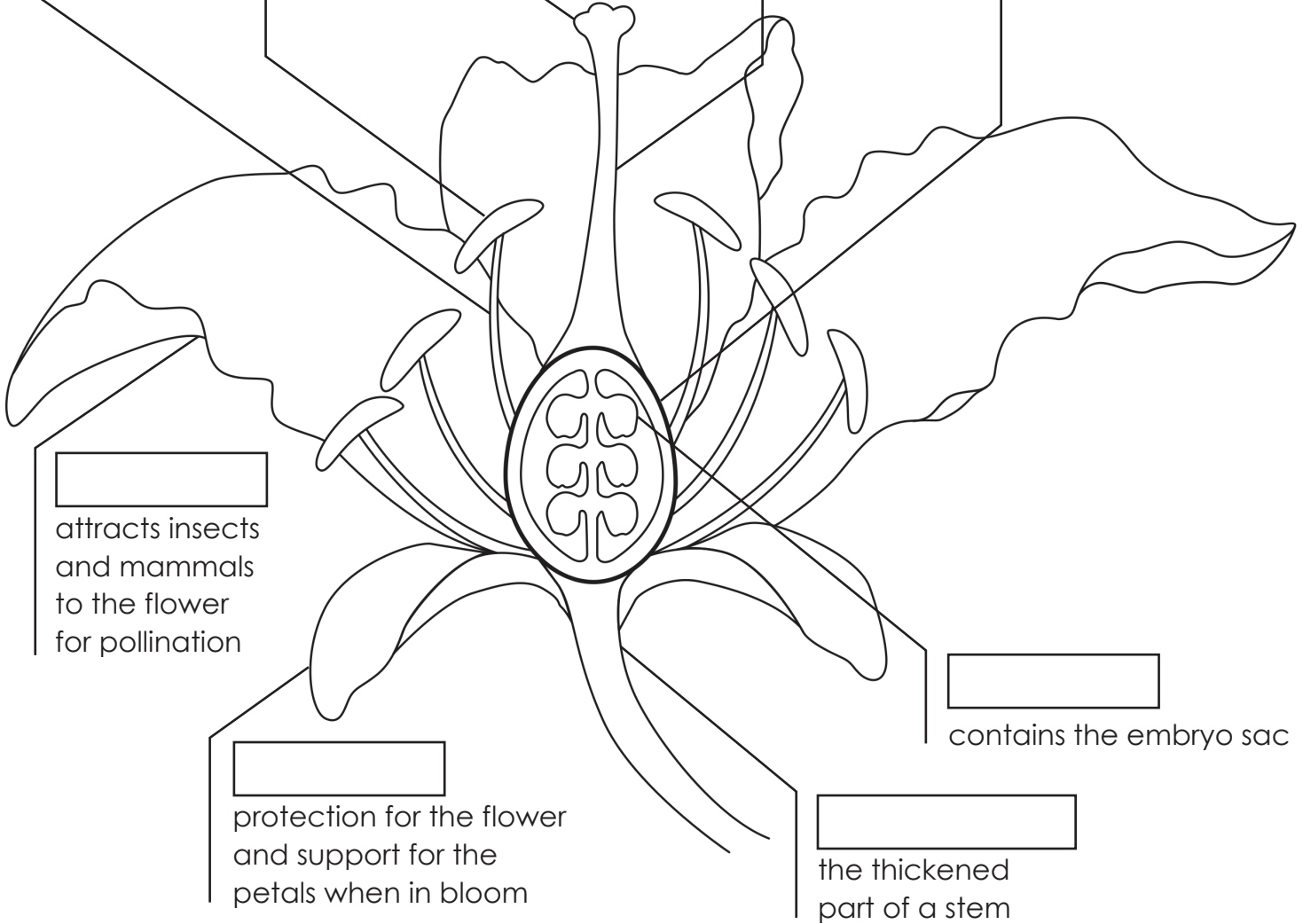
holds up the anther

produces pollen grains

catches pollen

connects the stigma to the ovary

stores the ovule or ovules



attracts insects and mammals to the flower for pollination

protection for the flower and support for the petals when in bloom

contains the embryo sac

the thickened part of a stem

Word bank

receptacle
style

sepal
anther

filament
carpel

stigma
ovary

petal
stamen

ovule

Anatomy of a Flower

Answer Key

stamen

male part of a flower

carpel

female part of a flower

filament

holds up the anther

anther

produces pollen grains

stigma

catches pollen

style

connects the stigma to the ovary

ovary

stores the ovule or ovules

petal

attracts insects and mammals to the flower for pollination

sepal

protection for the flower and support for the petals when in bloom

ovule

contains the embryo sac

receptacle

the thickened part of a stem

