

Name: _____

Food Chain Questions



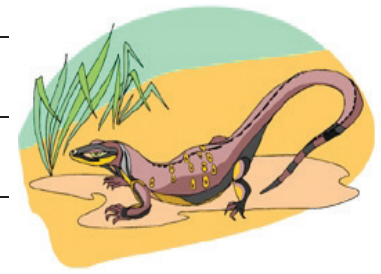
1. Draw a food chain that shows how a mouse, an owl, and grass are connected.

2. Explain how plants get their food.

3. Can an animal be both a predator and prey? Explain and give an example.

4. Name two animals that are omnivores. Give an example of a plant and an animal that each one might eat.

5. There are fewer animals in a desert than a rainforest. Why?



6. Dinosaurs like the Tyrannosaurus rex have been extinct for millions of years. Even though they have never seen a living Tyrannosaurus, scientists who have studied dinosaur fossils are certain that the Tyrannosaurus rex was a carnivore. Explain how they could know this.

7. How is a food chain different from a food web?

8. Give an example of when two different species might compete for the same prey.

ANSWER KEY

Food Chain Questions

1. Draw a food chain that shows how a mouse, an owl, and grass are connected.

grass — (eaten by) —> mouse — (eaten by) —> owl



2. Explain how plants get their food.

Plants make their own food in their leaves. They use sun, air, and water to make their food.

3. Can an animal be both a predator and prey? Explain and give an example.

Yes, an animal can be both a predator and prey. For example: A frog is a predator when it eats an insect. If a hawk eats the frog, it becomes prey.

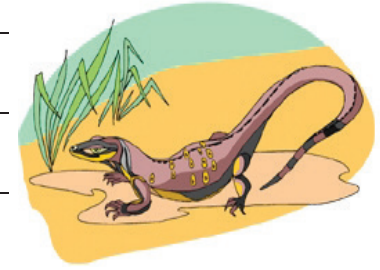
4. Name two animals that are omnivores. Give an example of a plant and an animal that each one might eat.

A grizzly bear is an omnivore. It eats nuts and berries (plants). It also eats fish (animals). A raccoon is also an omnivore. It might eat wildflowers (plants). It also eats crayfish (animals).

ANSWER KEY

5. There are fewer animals in a desert than a rainforest. Why?

There are fewer predators in the desert because there isn't as much prey. There is very little prey in the desert because there isn't much plant life.



6. Dinosaurs like the Tyrannosaurus rex have been extinct for millions of years. Even though they have never seen a living Tyrannosaurus, scientists who have studied dinosaur fossils are certain that the Tyrannosaurus rex was a carnivore. Explain how they could know this.

The teeth of a Tyrannosaurus rex were sharp and pointy. Animals with sharp teeth are predators that hunt other animals.

7. How is a food chain different from a food web?

A food chain shows the transfer of energy from one living thing to another. In a food chain each animal gets its energy from only one source. A food web shows many different ways plants and animals interact to make up an ecosystem. A food web would show animals eating and being eaten by many different things.

8. Give an example of when two different species might compete for the same prey.

A wolf and a fox might both hunt rabbits.