



Name: \_\_\_\_\_

## ELA Buzz

Rewrite the sentence correctly.

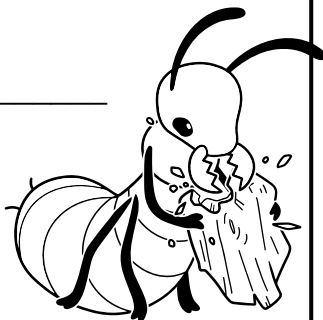
Turmites cost homeowners billion's of dollars yearly (5 errors)

\_\_\_\_\_

\_\_\_\_\_

\_\_\_\_\_

\_\_\_\_\_



Complete each sentence using the correct **plural possessive** noun.

\_\_\_\_\_ workers  
(Beehive's / Beehives')

sometimes turn on their queens.

Ant \_\_\_\_\_ members  
(colonys' / colonies')

can number in the millions!

Choose the correct relative pronoun.

Fill in the blank with the word that best



# Preview

Please log in to download the printable version of this worksheet.

A **preposition** is a word that shows a relationship between a noun or pronoun and some other word in the sentence. The relationship is often about time or location.

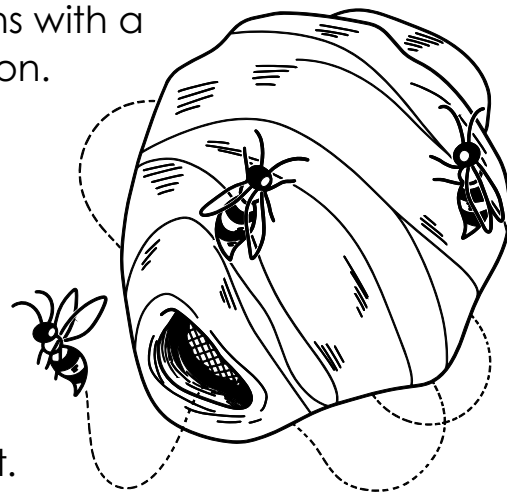
The **object of the preposition** is the noun or pronoun that follows the preposition.

A **prepositional phrase** is a group of words that begins with a preposition and ends with the object of the preposition.

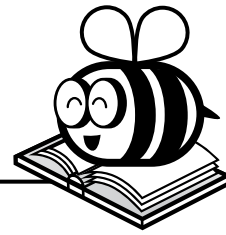
**Example:** The ant is far away from its colony.  
preposition      object of preposition  
prepositional phrase

Circle the preposition in the sentence. Underline the prepositional phrase.

Madeleine found a wasp nest in the yard last night.



Name: \_\_\_\_\_



## ELA BUZZ

Rewrite the sentence correctly.

Stellas Grandpa taught she how to play dominoes. **3 errors**



**She is not as skillful as her older sister.**

Rewrite the statement using the correct comparative form of **skillful** and the word **than**.

\_\_\_\_\_  
\_\_\_\_\_  
\_\_\_\_\_

\_\_\_\_\_  
\_\_\_\_\_  
\_\_\_\_\_



# Preview

Please log in to download the printable version of this worksheet.

a. dropped    b. fit    c. clicked

last week.

**Haul** is a homograph. Two of its definitions are listed below. Write the part of speech of each definition.

1. \_\_\_\_\_ – to pull or drag; to transport
2. \_\_\_\_\_ – winnings; everything that was collected at one time

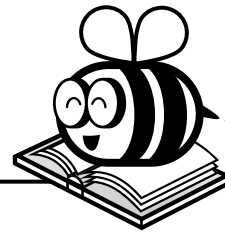
Write the number of the definition each sentence uses on the line.

\_\_\_\_\_ Amos's haul from the championship was more than \$10,000!

\_\_\_\_\_ "Can you haul the game table into the living room?" Mom asked.



Name: \_\_\_\_\_



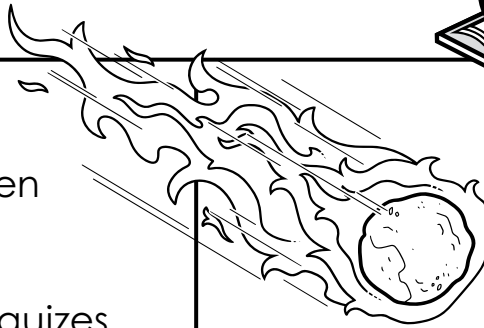
# ELA Buzz

Circle the misspelled word, then spell it correctly on the line.

Mr. Truong is giving makeup quizzes for last Friday's test on the solar system.

\_\_\_\_\_

Check the boxes that describe the word.



Add punctuation to make the sentence correct.

Hassan asked Do you know the difference between a meteor and an asteroid

Halley's Comet comes by every 76 years



## Preview

Please log in to download the printable version of this worksheet.

**am planning**

**planned**

I \_\_\_\_\_ a viewing party for a meteor shower next week.



One half is equal to fifty \_\_\_\_\_.

Check the box next to the sentence that uses an idiom. Underline the idiom.

- Most meteors that make their way down to Earth burn to ash before they even reach the ground.
- The daydreaming boy came back down to Earth quickly when the teacher called his name.

Name: \_\_\_\_\_



## ELA Buzz

Fill in the blank using the word or phrase from the box that best links the ideas.

**In addition      However      For example**

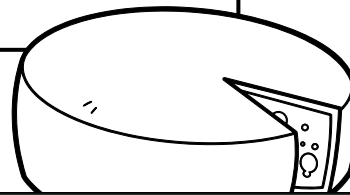
Many cheeses take a long time to age.  
\_\_\_\_\_, cheddar and Parmesan usually take at least a year.

Circle the two words that should be capitalized.

The spanish word *queso* simply means *cheese*, but it is used in english

to mean only one kind of cheese dip.

Proverbs are short, common sayings that tell a truth about life. They are most often presented in the form of advice.



# Preview

Please log in to download the printable version of this worksheet.

change.

Think of a time when you might say it to someone.

\_\_\_\_\_  
\_\_\_\_\_

disinfect?

- a. carefully prepare
- b. clean to kill germs
- c. wash and tidy up

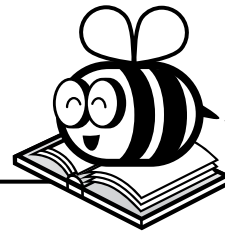
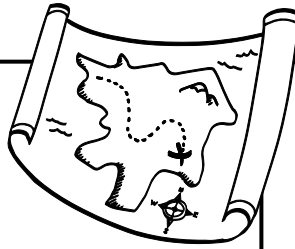
Check the box next to the sentence with no spelling errors. Circle the spelling error in the other sentence.

- Healthy dairy cows are sizeabel animals that weigh upward of 1,000 pounds!
- Large cheese factories make hundreds of millions of pounds of cheese per year.



Name: \_\_\_\_\_

# ELA Buzz



We haven't seen the land in weeks,  
and how my new home sways!  
The men have cats that hunt my squeaks;  
I hide away most days.  
There's water splashing all around,  
but it's not safe to drink.  
I cannot wait to crawl on ground,  
so let's hope we don't sink!  
One day they point and shout out, "Land!"  
The men all give a cheer.  
Though I can't talk I understand

Write the correct word to complete the sentence.

\_\_\_\_\_ been a rough journey!  
(Its/It's)

Circle the adverb that shows frequency.

Since cats can catch pests more easily than





## Preview

Please log in to download the printable version of this worksheet.

---



---



---



---

The poem is told from whose point of view?

- a. an explorer
- b. a mouse
- c. a narrator who isn't part of the story

Circle what the characters in the poem are most likely crossing.

**a pond    a river    a lake    an ocean**

They packed water grains  
beans dried meats and  
cheese for the trip.

Circle the two misspelled words,  
then spell them correctly on the  
lines.

The same journey that takes  
days or weeks by bote might  
take only hours by plain.

---



---



Rewrite the sentence correctly.

Termites cost homeowners billion's of dollars yearly

5 errors

Termites cost homeowners

Complete each sentence using the correct **plural possessive** noun.

Beehives' workers  
(Beehive's / Beehives')  
sometimes turn on their  
stings.

Choose the correct relative pronoun from the box to complete the sentence.

**where when who**

Yosef is the one who

Fill in the blank with the word that best completes the sentence.

**warnings alarms hints**

Many bees sting to defend

Circle the preposition in the sentence. Underline the prepositional phrase.

Madeleine found a wasp nest in the yard last night.

# Preview

Please log in to download the printable version of this worksheet.



Give two pieces of evidence that the "new home" is a ship.

*accept any two:*  
the speaker hasn't seen land in weeks;  
the home sways; water splashes all  
around; they aren't on ground; they  
might sink; someone spots land

The poem is told from whose point of view?

b. a mouse

Circle what the characters are most likely crossing.

an ocean

Write the correct word to complete the sentence.

It's been a rough journey!  
(It's / It's)

Circle the adverb that shows frequency.

Since cats can catch pests more easily than humans, they have always been welcome aboard ships.

Add commas to make the sentence correct.

They packed water, grains, beans, dried meats, and cheese for the trip.

Circle the two misspelled words, then spell them correctly on the lines.

The same journey that takes days or weeks by bote might take only hours by plain

boat      plane