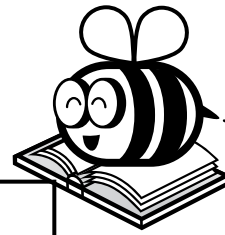


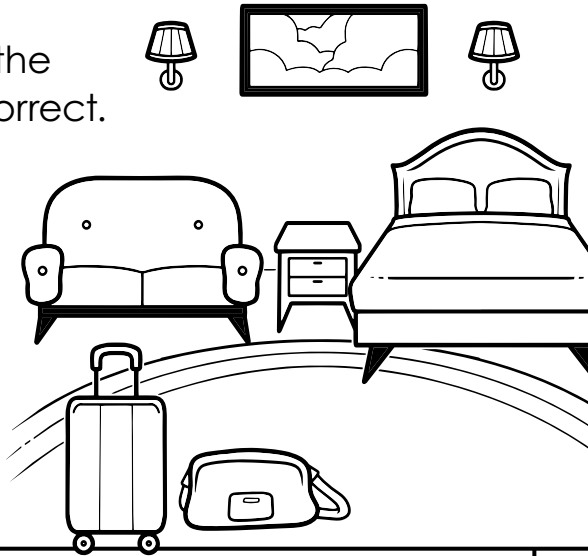
Name: \_\_\_\_\_



# ELA Buzz

Add commas to make the compound sentence correct.

Our room had two beds a pullout sofa and a TV and we were very comfortable staying there.



Circle the two adverbs. Underline the four pronouns.

Dad said he easily booked the best room we could get. He is often the one who handles lodgings on family trips.



cowch  
(sofa)

\_\_\_\_\_

\_\_\_\_\_

\_\_\_\_\_ indoors

\_\_\_\_\_ incorrect

Use the correct homophones to complete the sentences.

**in      inn**

We stayed \_\_\_\_\_ a comfy \_\_\_\_\_ that didn't cost too much per night.

What city was the \_\_\_\_\_ \_\_\_\_\_ ?



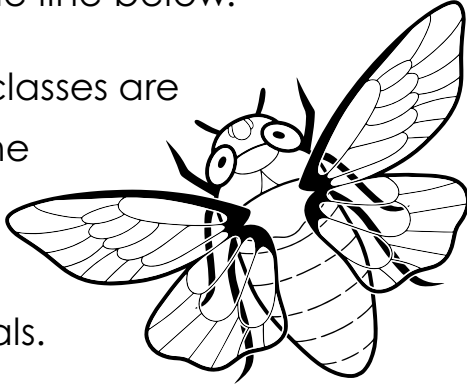
Name: \_\_\_\_\_



## ELA Buzz

Circle the misspelled word, then spell it correctly on the line below.

Ms. Switalski's classes are comparing the wing structures of different animals.



Underline the two things being compared by the simile.

**Emma thinks insect wings look as fragile as a glass window.**

Write a word or phrase to replace the second thing being compared that would make the simile have the same meaning.



# Preview

Please log in to download the printable version of this worksheet.

\_\_\_\_\_ and extinct reptiles called pterosaurs

\_\_\_\_\_ for learning how flight works.

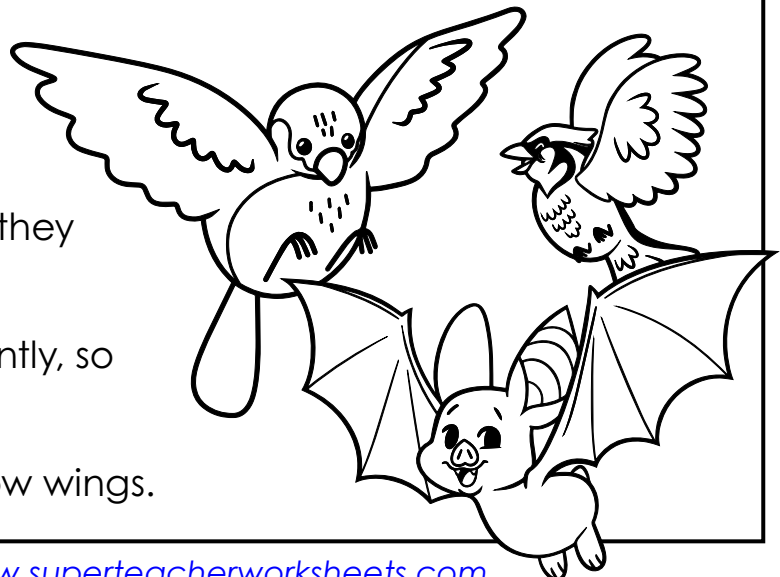
Write **S** (simple sentence), **C** (compound sentence), **F** (fragment), or **CS** (comma splice), to tell what each example is.

\_\_\_\_\_ Gliding in many other animals like fish and amphibians.

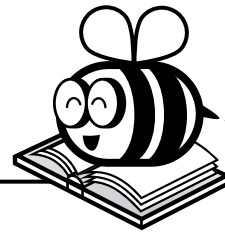
\_\_\_\_\_ Wings don't need feathers, nor do they need skin.

\_\_\_\_\_ Insect and bird wings move differently, so do bat wings.

\_\_\_\_\_ Insects were the first animals to grow wings.



Name: \_\_\_\_\_



# ELA Buzz

Draw a line to match each text description with its genre.

**new book about the life of Sacagawea** •

• **myth**

**Sioux story about how the world was made** •

• **legend**

**fanciful tale about a real person, Hiawatha** •

• **biography**

Fill in the blanks using the plural forms of the indicated nouns.

Jim Thorpe won many

\_\_\_\_\_ (award)

and \_\_\_\_\_ (trophy)



including two

Olympic



# Preview

Please log in to download the printable version of this worksheet.

Paleo-Indians were the first people to live in North America.

Are you learning you're state history too?

native american

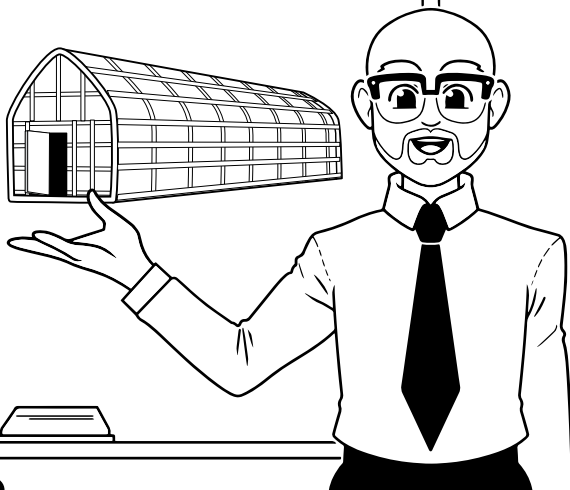
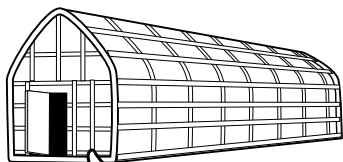
congressman, senator, and

vice president.

Rewrite the sentence correctly.

"Many family could fits in one longhouse" said mr. Jones. **4 errors**

\_\_\_\_\_  
\_\_\_\_\_  
\_\_\_\_\_



Name: \_\_\_\_\_



## ELA Buzz

Turn the run-on into a compound sentence using a comma and the word **and**.

Ms. Lopez is teaching us map skills we'll take a test on them soon.

---

---

---

Check the box next to the sentence that uses an idiom. Then explain what the idiom means.

- The singer's outstanding show really put her on the map.
- What can we put on the map to help flatten it out?

---



# Preview

Please log in to download the printable version of this worksheet.

Make sure the scale line is straight!

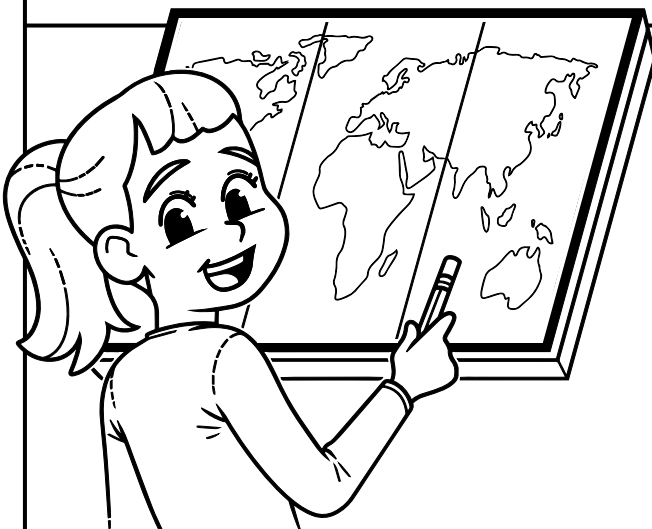
Color the strate blue since it's water.

cred

vis

flex

in \_\_\_\_\_ ible – not able to be seen



Rewrite the sentence correctly.

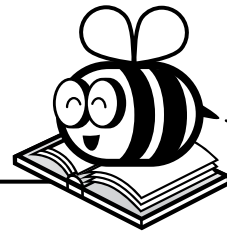
Ruby careful drew the lines of latitude on her's map. (3 errors)

---

---

---

Name: \_\_\_\_\_



# ELA Buzz

Visiting their grandparents' cabin in winter was always an adventure. The dark, damp basement was like a cave. The dusty, musty attic contained many hidden surprises. The nearby lake was great for ice skating once it froze over. The woods were perfect for a hike or game of hide-and-seek.

There were so many cool things to do. Jordan never understood why his sister's favorite activity was sitting by the fire and watching snowflakes dance outside the window.

The passage uses a simile to compare what two things?



**Preview**  
Please log in to download the printable version of this worksheet.

a. basement

b. attic

c. snowflakes

Circle the misspelled word.

**wonderful    magical    possible**

Rewrite the title using the correct capitalization and punctuation.

***whats in the woods by grandpas cabin***

Use the antonym for **worse** to complete the sentence.

**superior    terrible    amusing**

Do you think Jordan's idea of fun is \_\_\_\_\_?

Circle the two words that use the suffix **-est** to make superlative adjectives.

**dampest    suggest    forest    dustiest**

Add commas to make the compound sentence correct.

Our room had two beds, a pullout sofa, and a TV, and we were very comfortable.

Circle the two adverbs. Underline the four pronouns.

Dad said he easily booked the best room we could get. He is often the one who handles lodgings on

Correctly spell each word. Then write a sentence using one on the lines below.

incorrect	correct
gests	guests

The prefix **in-** often means **not** (1) or **in; inside** (2).

Write (1) or (2) to tell which meaning of the prefix is used in each word.

Use the correct homophones to complete the sentences.

in inn

We stayed in a comfy inn that didn't cost too

# Preview

Please log in to download the printable version of this worksheet.



The passage uses a simile to compare what two things?

the basement and a cave

What do you know is true about Jordan and his sister?

b. They have different interests.

What is personification used to describe in the passage?

c. snowflakes

Circle the misspelled word.

wonderful

magical

possible

Rewrite the title using the correct capitalization and punctuation.

whats in the woods by grandpas cabin

What's in the Woods by

Grandpa's Cabin?

Use the antonym for **worse** to complete the sentence.

superior terrible amusing

Do you think Jordan's idea of fun is superior?

Circle the two words that use the suffix **-est** to make superlative adjectives.

dampest

suggest

forest

dustiest