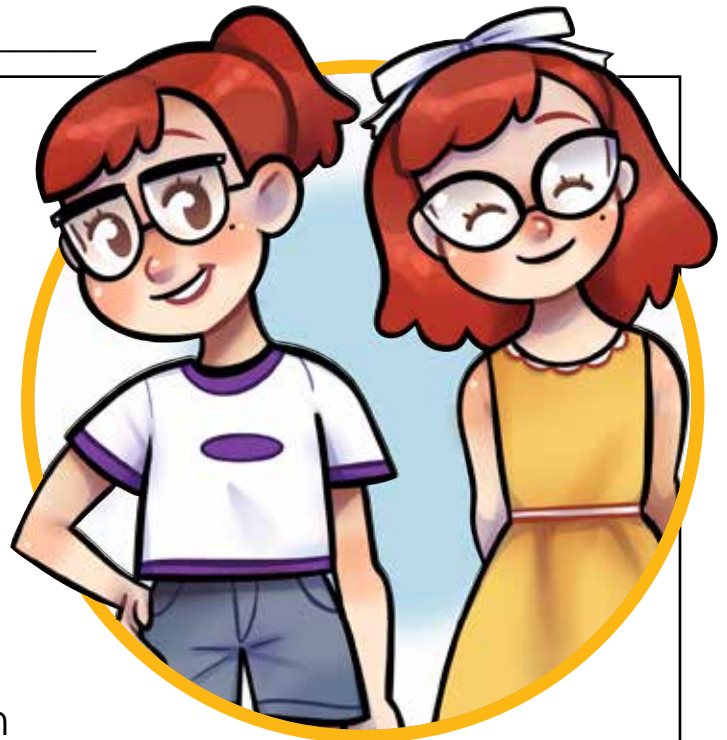


Name: \_\_\_\_\_

# The Twins

Sarah and Ruth are twins. They were born on the same day and look alike. But Sarah and Ruth are very different people.



Sarah is shy and quiet, but Ruth



## Preview

Please log in to download  
the printable version of this worksheet.

There are also more differences in the twins. Sarah's favorite color is pink and Ruth's favorite color is blue.

Ruth likes to eat vegetables, but Sarah doesn't like many vegetables. Also, Ruth's favorite drink is fruit juice while Sarah's favorite drink is milk.

The twins look alike, but they are different on the inside and they are still best friends. Sarah and Ruth love each other very much.

Name: \_\_\_\_\_

# The Twins



1. Which twin is shy and quiet?

\_\_\_\_\_

2. Whose favorite class is reading?



## Preview

Please log in to download the printable version of this worksheet.

\_\_\_\_\_

4. What kind of pet does Ruth have?

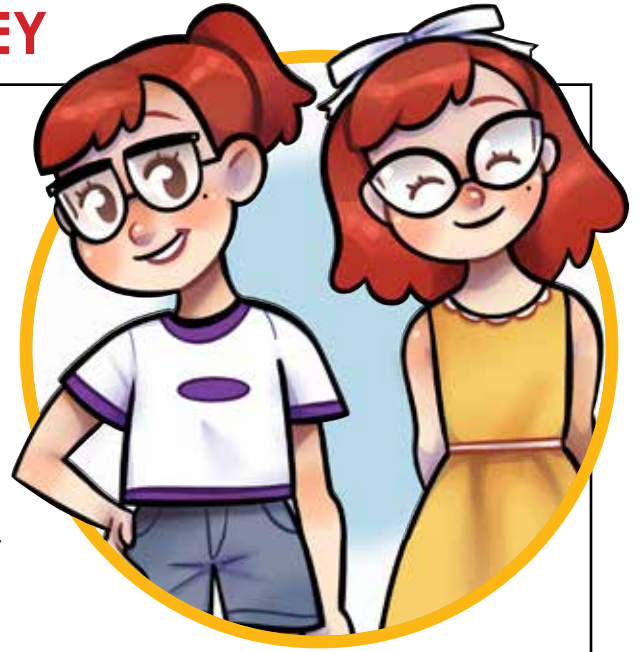
\_\_\_\_\_

5. Which twin's favorite color is blue?

\_\_\_\_\_

## ANSWER KEY

# The Twins



1. Which twin is shy and quiet?

**Sarah**

---

2. Whose favorite class is reading?



**Sally**

---

# Preview

Please log in to download  
the printable version of this worksheet.

4. What kind of pet does Ruth have?

**A bird**

---

5. Which twin's favorite color is blue?

**Ruth**

---