

Name: _____

Anna and the Missing Puzzle Piece

by Anita N. Amin

Anna was working on a new puzzle. It had pictures of fairies, unicorns, and magicians.

She fit a piece into the puzzle. The piece filled in a fairy wing.

"I'm almost done, Kitty!" Anna smiled at her kitten. She just needed to put one more piece into the puzzle – the unicorn horn.

Anna looked down but the last puzzle piece wasn't there.



Preview

Please log in to download
the printable version of this worksheet.

A puzzle piece fell out of the box.

"You found the last piece, Kitty," Anna said. "I must have left it in the box. I'm sorry I blamed you, Kitty."

Kitty came back and sat next to Anna.

Anna popped the last piece into the puzzle. She gave a big smile. "I finished the puzzle!"

Kitty meowed.

Anna laughed. "I mean we finished the puzzle."

And she and Kitty stood back and admired their hard work.

Name: _____

Anna and the Missing Puzzle Piece

by Anita N. Amin



1. Which puzzle piece does Anna need to find in order to finish her puzzle?
 - a. a magician hat
 - b. a fairy wing
 - c. a unicorn horn
 - d. a princess crown
2. Read the following passage from the story.

"Where is it?" Anna asked. She frowned at Kitty. "Did you take it, Kitty? Give it back! That's not for you."

How is Anna acting toward Kitty in the passage above?

- a. Anna is blaming Kitty for her missing puzzle piece.



Preview

Please log in to download
the printable version of this worksheet.

4. At the end of the story, Anna says, "I finished the puzzle!"
Why does Kitty meow in response?

5. What is this story about?

- a. making new friends
- b. teamwork
- c. overcoming differences
- d. learning how to be brave

Name: _____

Anna and the Missing Puzzle Piece

by Anita N. Amin

Draw lines to match the words from the story with their meanings.



- | | | | | |
|----|---------|---|---|--|
| 1. | unicorn | • | • | a tiny, human-like being with magic powers and wings |
| 2. | blamed | • | • | a picture printed on different-shaped pieces that have to be |



Preview

Please log in to download the printable version of this worksheet.

show displeasure or disappointment

- | | | | | |
|----|---------|---|---|--|
| 5. | puzzle | • | • | accused someone of doing something wrong |
| 6. | frowned | • | • | looked at something with delight or pleasure |

Name: _____

Anna and the Missing Puzzle Piece

by Anita N. Amin

In the story, "Anna and the Missing Puzzle Piece," Anna learns that Kitty didn't take her missing puzzle piece, but actually helped her find it so she could finish the puzzle. She realizes that sometimes it takes teamwork to get something done.



On the lines below, write about a time when you used teamwork to do something you couldn't do by yourself.



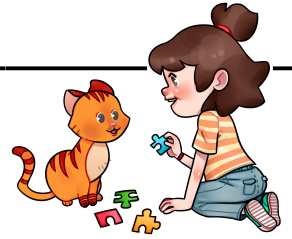
Preview

Please log in to download
the printable version of this worksheet.

ANSWER KEY

Anna and the Missing Puzzle Piece

by Anita N. Amin



1. Which puzzle piece does Anna need to find in order to finish her puzzle? c

a. a magician hat

b. a fairy wing

c. a unicorn horn

d. a princess crown

Preview

Please log in to download
the printable version of this worksheet.



a. making new friends

b. teamwork

c. overcoming differences

d. learning how to be brave

ANSWER KEY

Anna and the Missing Puzzle Piece

by Anita N. Amin

Draw lines to match the words from the story with their meanings.



Preview

Please log in to download
the printable version of this worksheet.



LD