

Name: _____



Math Buzz

Which fact is related to this subtraction fact?

$$12 - 7 = 5$$

$12 + 7 = 19$

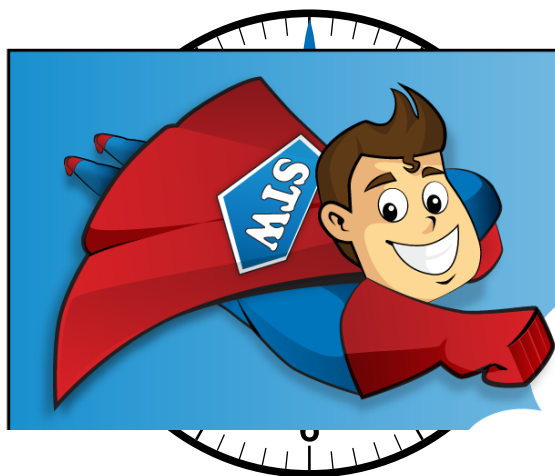
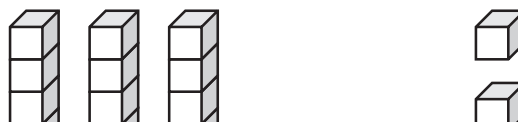
$7 + 5 = 12$

$6 + 6 = 12$

$12 + 5 = 17$

Draw the hour hand to show 3:00.

Add.



Preview

Please log in to download the printable version of this worksheet.

Wes is 6 years old. Mia is 9 years older.
How old is Mia?



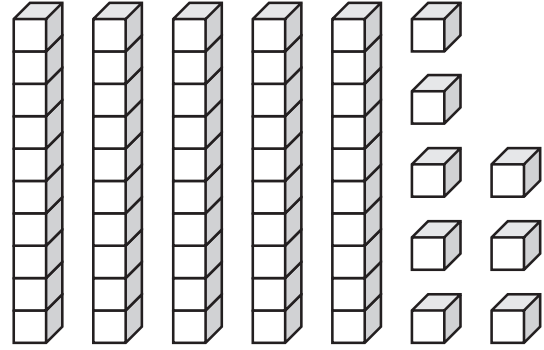
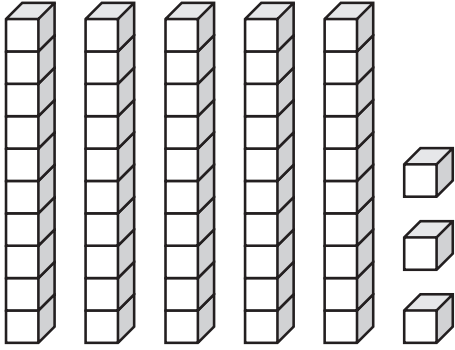
answer: _____ years old

Name: _____



Math Buzz

Compare.



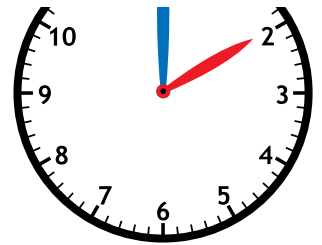
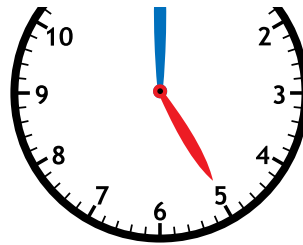
_____ is less than _____



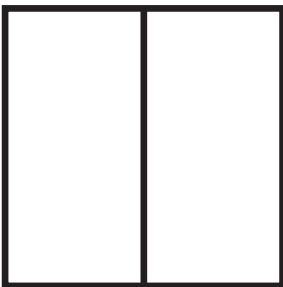
Preview

Please log in to download
the printable version of this worksheet.

$$\begin{array}{r} 7 \\ + 4 \\ \hline \end{array}$$



Fill in the missing numbers.



The square shows _____ halves.

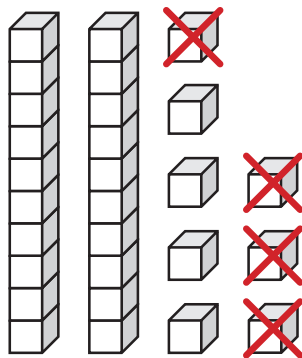
The _____ equal parts make 1 whole.

Name: _____



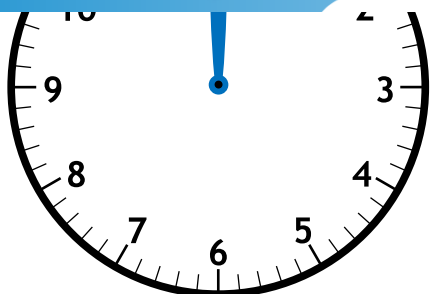
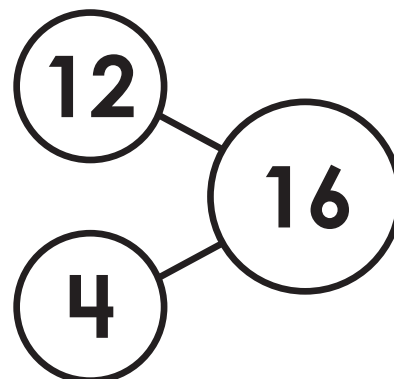
Math Buzz

Subtract.



$$\square - \square = \square$$

Write the fact family for the numbers in the number bond.



Preview

Please log in to download the printable version of this worksheet.

$$\underline{\quad} - \underline{\quad} = \underline{\quad}$$

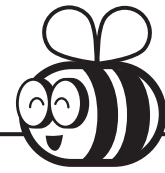
$$\underline{\quad} - \underline{\quad} = \underline{\quad}$$

10 kids were at the birthday party. 4 had ice cream and the rest had cake. How many kids had cake?

answer: _____ kids



Name: _____



Math Buzz

Fill in the missing numbers.

61	62	63	64	65	66	67	68	69	70
71	72	73	74	75	76	77	78	79	80
81	82	83	84	85	86	87	88	89	90

10 less

75

10 more

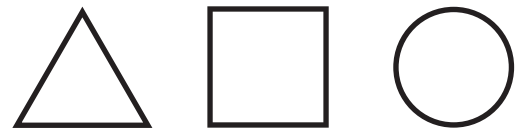


Preview

Please log in to download the printable version of this worksheet.

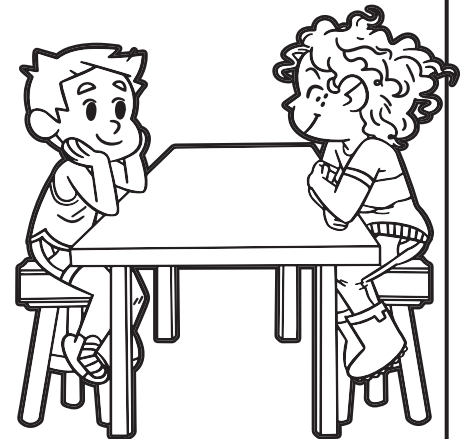
_____ is greater than _____

_____ > _____



6 kids sit at the front table. 5 kids sit at the back table. 1 more kid sat at the back table. How many kids are at both tables combined?

answer: _____ kids

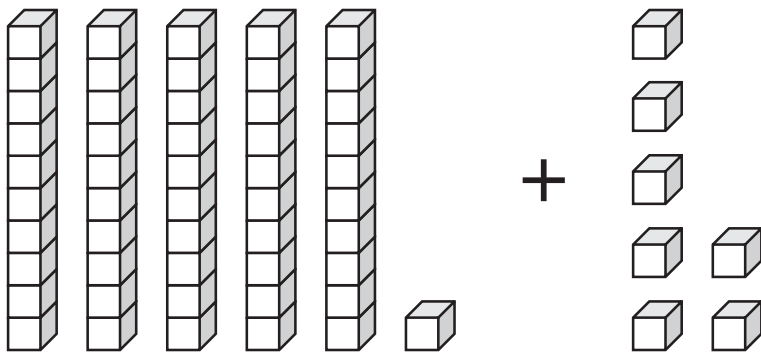


Name: _____



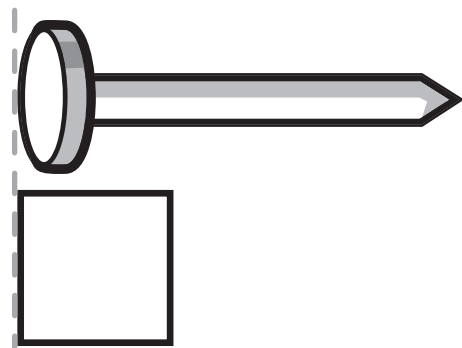
Math Buzz

Add.



$$\boxed{} + \boxed{} = \boxed{}$$

About how many squares long is the nail?

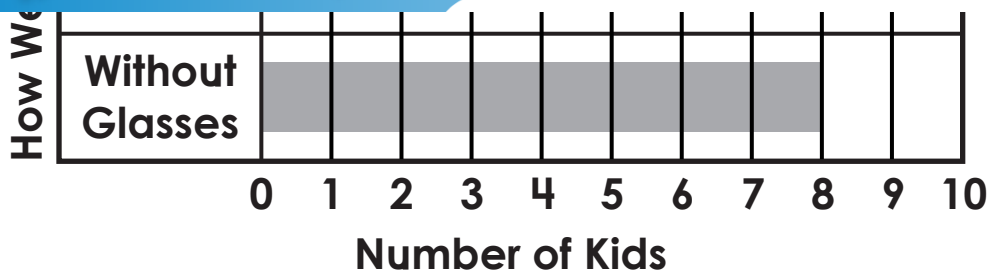


The nail is about _____



Preview

Please log in to download the printable version of this worksheet.



How many kids do not wear glasses? _____

How many kids wear glasses? _____

Which is true?

More kids wear glasses.

Fewer kids wear glasses.

48

4 tens 4 ones

8 tens 4 ones

4 tens 8 ones

8 tens 8 ones



Which fact is related to this subtraction fact?

$$12 - 7 = 5$$

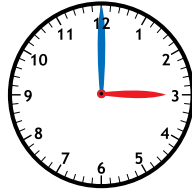
$$12 + 7 = 19$$

$$7 + 5 = 12$$

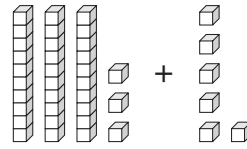
$$6 + 6 = 12$$

$$12 + 5 = 17$$

Draw the hour hand to show 3:00.



Add.



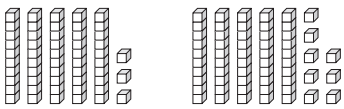
$$33 + 6 = 39$$

Wes is 6 years old. Mia is 9 years older. How old is Mia?

$$6 + 9 = 15$$

answer: 15 years old

Compare.



53 is less than 58

$$53 < 58$$

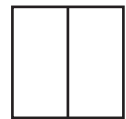
Add.

$$\begin{array}{r} 19 \\ + 4 \\ \hline 23 \end{array}$$

Amir and his family eat dinner at 5:00. Which clock shows 5:00?



Fill in the missing numbers.



The square shows 2 halves.



Preview

Please log in to download the printable version of this worksheet.

answer: 2 KIDS

Fill in the missing numbers.

61	62	63	64	65	66	67	68	69	70
71	72	73	74	75	76	77	78	79	80
81	82	83	84	85	86	87	88	89	90

10 less

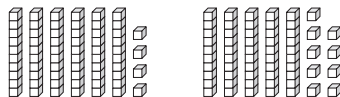
65

75

10 more

85

Compare.



64 is greater than 59

$$64 > 59$$

Which flat surface does a **cube** have?

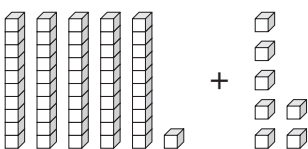


6 kids sit at the front table. 5 kids sit at the back table. 1 more kid sat at the back table. How many kids are at both tables combined?

$$6 + 5 + 1 = 12$$

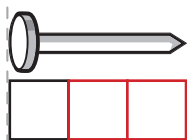
answer: 12 kids

Add.



$$51 + 7 = 58$$

About how many squares long is the nail?



The nail is about 3 squares long.

Use the graph to answer the questions.

How many kids do not wear glasses? 8

How many kids wear glasses? 4

Which is true?

More kids wear glasses.

Fewer kids wear glasses.

How many tens and ones make this number?

48

4 tens 4 ones

8 tens 4 ones

4 tens 8 ones

8 tens 8 ones