

I Have...Who Has...

Clock Reading Game

How to play the game:

- Distribute the cards randomly to your students. Some students may get more than one card.
- Select a student to begin by reading their card aloud.
(example: I have 8:15. Who has 10:45?)
- The student who has the card with the clock face picturing the previous student's "Who Has..." question reads their card aloud.
(example: I have 10:45. Who has 1:19?) And so on.
- Students must listen for their turn and try not to break the chain.
- When the chain is circles around to the first student, the game is over.

Suggestions:



Preview

Please log in to download
the printable version of this worksheet.

B: I have 1:47. Who has 3:09?

C: I have 3:09. Who has 8:35?

D: I have 8:35. Who has 1:17?

E: I have 1:17. Who has 6:42?

F: I have 6:42. Who has 11:29?

G: I have 11:29. Who has 4:45?

H: I have 4:45. Who has 9:39?

I: I have 9:39. Who has 2:06?

J: I have 2:06. Who has 7:56?

K: I have 7:56. Who has 12:30?

L: I have 12:30. Who has 5:24?

M: I have 5:24. Who has 10:43?

O: I have 3:33. Who has 8:14?

P: I have 8:14. Who has 1:48?

Q: I have 1:48. Who has 6:10?

R: I have 6:10. Who has 11:13?

S: I have 11:13. Who has 4:59?

T: I have 4:59. Who has 9:07?

U: I have 9:07. Who has 2:00?

V: I have 2:00. Who has 7:39?

W: I have 7:39. Who has 12:54?

X: I have 12:54. Who has 5:50?

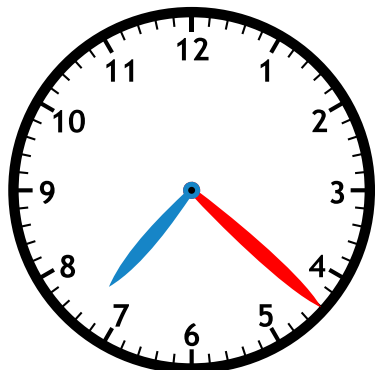
Y: I have 5:50. Who has 10:21?

Z: I have 10:21. Who has 7:22?

I Have...Who Has...

Clock Reading Game

I have

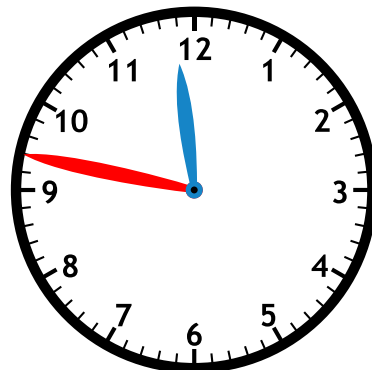


Who has
11:47 ?

I Have...Who Has...

Clock Reading Game

I have

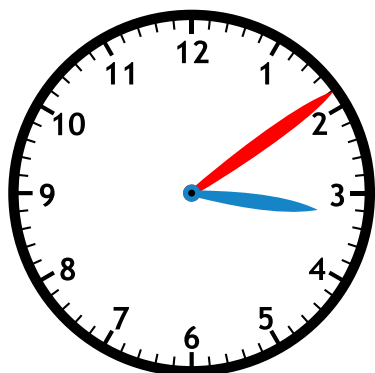


Who has
3:09 ?



Preview

Please log in to download
the printable version of this worksheet.



Who has
8:35 ?

Card C



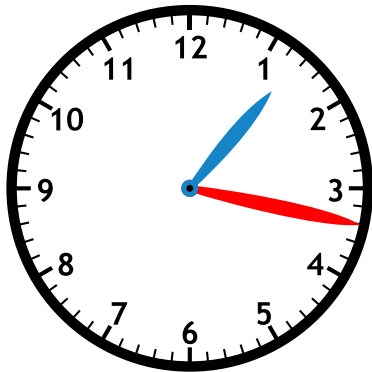
Who has
1:17 ?

Card D

I Have...Who Has...

Clock Reading Game

I have

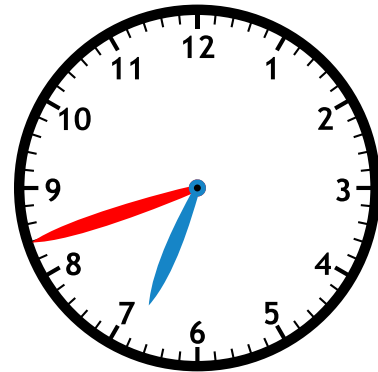


Who has
6:42 ?

I Have...Who Has...

Clock Reading Game

I have

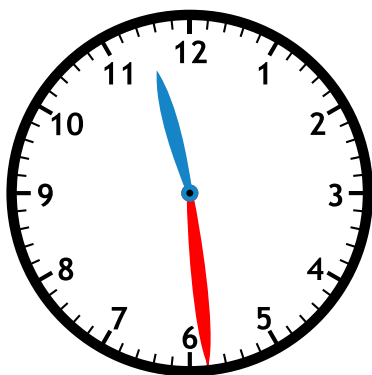


Who has
11:29 ?



Preview

Please log in to download
the printable version of this worksheet.



Who has
4:45 ?

Card G



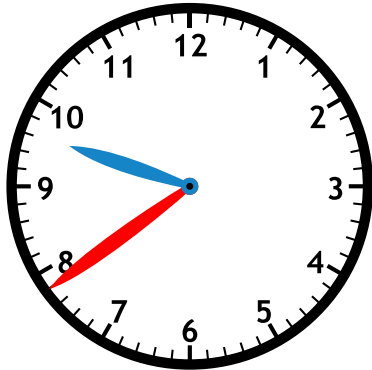
Who has
9:39 ?

Card H

I Have...Who Has...

Clock Reading Game

I have



Who has
2:06 ?

I Have...Who Has...

Clock Reading Game

I have

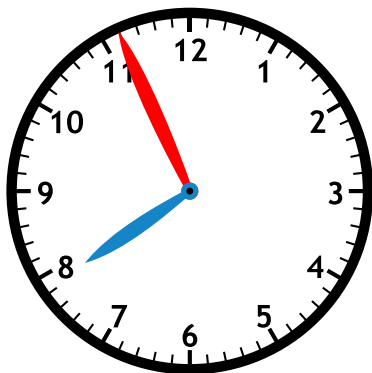


Who has
7:56 ?



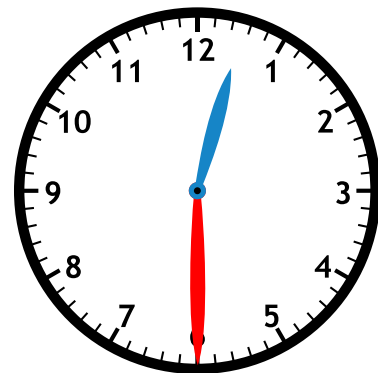
Preview

Please log in to download
the printable version of this worksheet.



Who has
12:30 ?

Card K



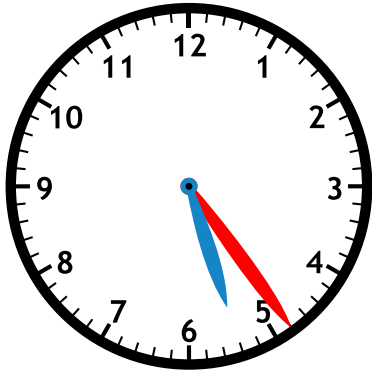
Who has
5:24 ?

Card L

I Have...Who Has...

Clock Reading Game

I have

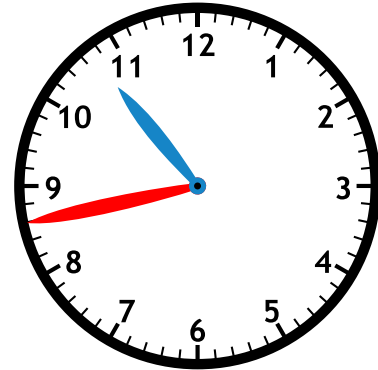


Who has
10:43 ?

I Have...Who Has...

Clock Reading Game

I have

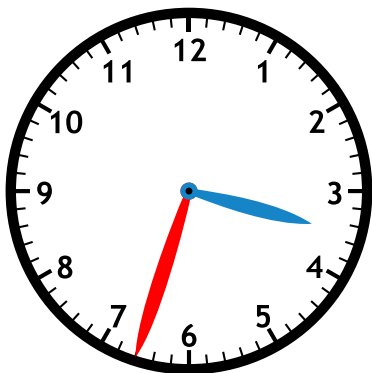


Who has
3:33 ?



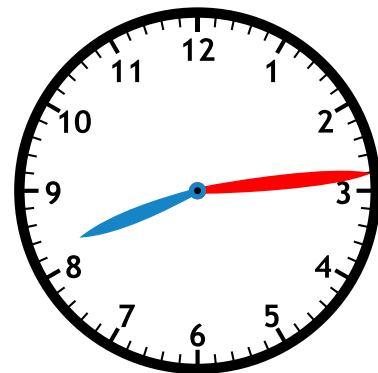
Preview

Please log in to download
the printable version of this worksheet.



Who has
8:14 ?

Card O



Who has
1:48 ?

Card P

I Have...Who Has...

Clock Reading Game

I have



Who has
6:10 ?

I Have...Who Has...

Clock Reading Game

I have

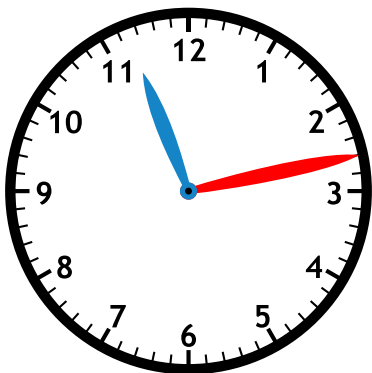


Who has
11:13 ?



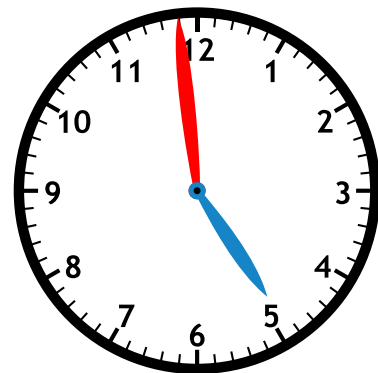
Preview

Please log in to download
the printable version of this worksheet.



Who has
4:59 ?

Card S



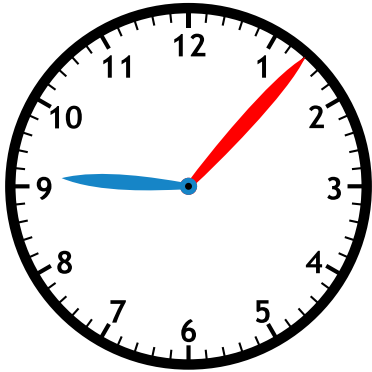
Who has
9:07 ?

Card T

I Have...Who Has...

Clock Reading Game

I have

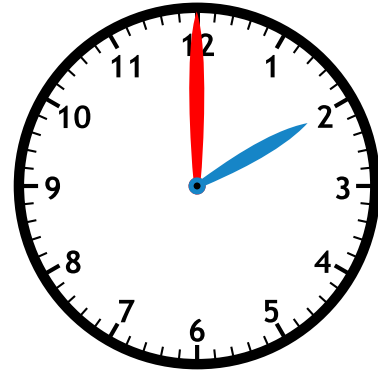


Who has
2:00 ?

I Have...Who Has...

Clock Reading Game

I have

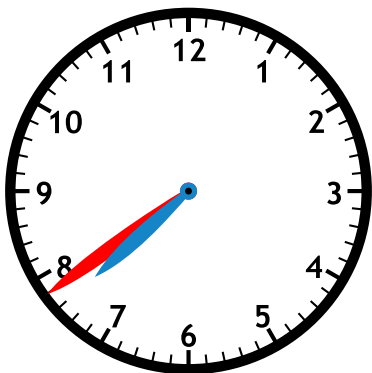


Who has
7:39 ?



Preview

Please log in to download
the printable version of this worksheet.



Who has
12:54 ?

Card W



Who has
5:50 ?

Card X

I Have...Who Has...

Clock Reading Game

I have

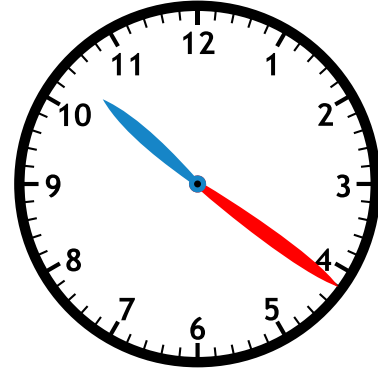


Who has
10:21 ?

I Have...Who Has...

Clock Reading Game

I have



Who has
7:22 ?



Preview

Please log in to download
the printable version of this worksheet.

C: I have 3:09. Who has 8:35?
D: I have 8:35. Who has 1:17?
E: I have 1:17. Who has 6:42?
F: I have 6:42. Who has 11:29?
G: I have 11:29. Who has 4:45?
H: I have 4:45. Who has 9:39?
I: I have 9:39. Who has 2:06?
J: I have 2:06. Who has 7:56?
K: I have 7:56. Who has 12:30?
L: I have 12:30. Who has 5:24?
M: I have 5:24. Who has 10:43?

P: I have 8:14. Who has 1:48?
Q: I have 1:48. Who has 6:10?
R: I have 6:10. Who has 11:13?
S: I have 11:13. Who has 4:59?
T: I have 4:59. Who has 9:07?
U: I have 9:07. Who has 2:00?
V: I have 2:00. Who has 7:39?
W: I have 7:39. Who has 12:54?
X: I have 12:54. Who has 5:50?
Y: I have 5:50. Who has 10:21?
Z: I have 10:21. Who has 7:22?

Cut this section out and fold it in half to store the cards in when not in use.