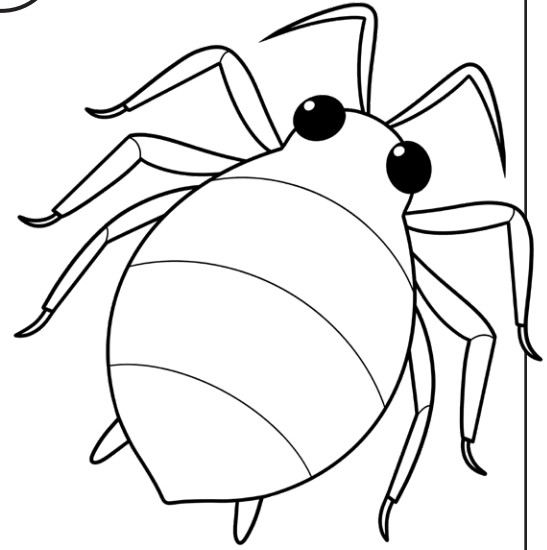


## Typing Activity

Below is a box with 12 of your spelling words in it. Type 12 sentences. Each sentence should have a spelling word in it.



### Word Box

- |                |               |              |
|----------------|---------------|--------------|
| 1. aphid       | 5. humidity   | 9. sorrowful |
| 2. postpone    | 6. evaluation | 10. annual   |
| 3. exceedingly | 7. conveyed   | 11. goatee   |
| 4. identical   | 8. queasy     | 12. genuine  |

### Step 1: Type sentences with your spelling words in them.

- Type your name at the top of the page.
- Use each word in a complete sentence.
- Each sentence should have at least 7 words in it.
- Number the sentences 1 through 12.
- Underline the spelling word in each sentence.

### Step 2: Proofread your work.

- Check to be sure all words are spelled correctly.
- Be sure each sentence makes sense, begins with a capital letter, and ends with a punctuation mark.
- Check to make sure you underlined each spelling word.
- Be sure each sentence has 7 or more words in it.
- Check to make sure you numbered your sentences and typed your name at the top of the page.

### Step 3: Adjust the font and size.

- Choose a basic font that is easy to read, such as Arial or Verdana.
- Your font size should be between 12 and 16 point.

### Step 4: Save or print your file, as per your teacher's instructions.

## Teacher Notes

- We suggest you disable automatic numbering. It can be confusing for students, especially if they are leaving blank lines between sentences with the enter key.
- We also suggest that you disable the spelling autocorrect feature. This will prevent the computer from correcting words automatically, without the student noticing.

Name: \_\_\_\_\_

Spelling List F-2: Long Vowels

## Score

\_\_\_\_\_ / **25** Student wrote 12 complete sentences. Each sentence makes sense and has 7 or more words in it.

\_\_\_\_\_ / **50** All words in the sentences are spelled correctly.

\_\_\_\_\_ / **10** Student has correctly used spaces, capital letters, and punctuation.

\_\_\_\_\_ / **10** Sentences are numbered, and spelling words are underlined. Student has chosen a font size and style that is easy to read.

\_\_\_\_\_ / **5** Student has successfully saved or printed the file, as per the teacher's instructions.

\_\_\_\_\_ / **100** total score

**Comments:** \_\_\_\_\_  
\_\_\_\_\_  
\_\_\_\_\_